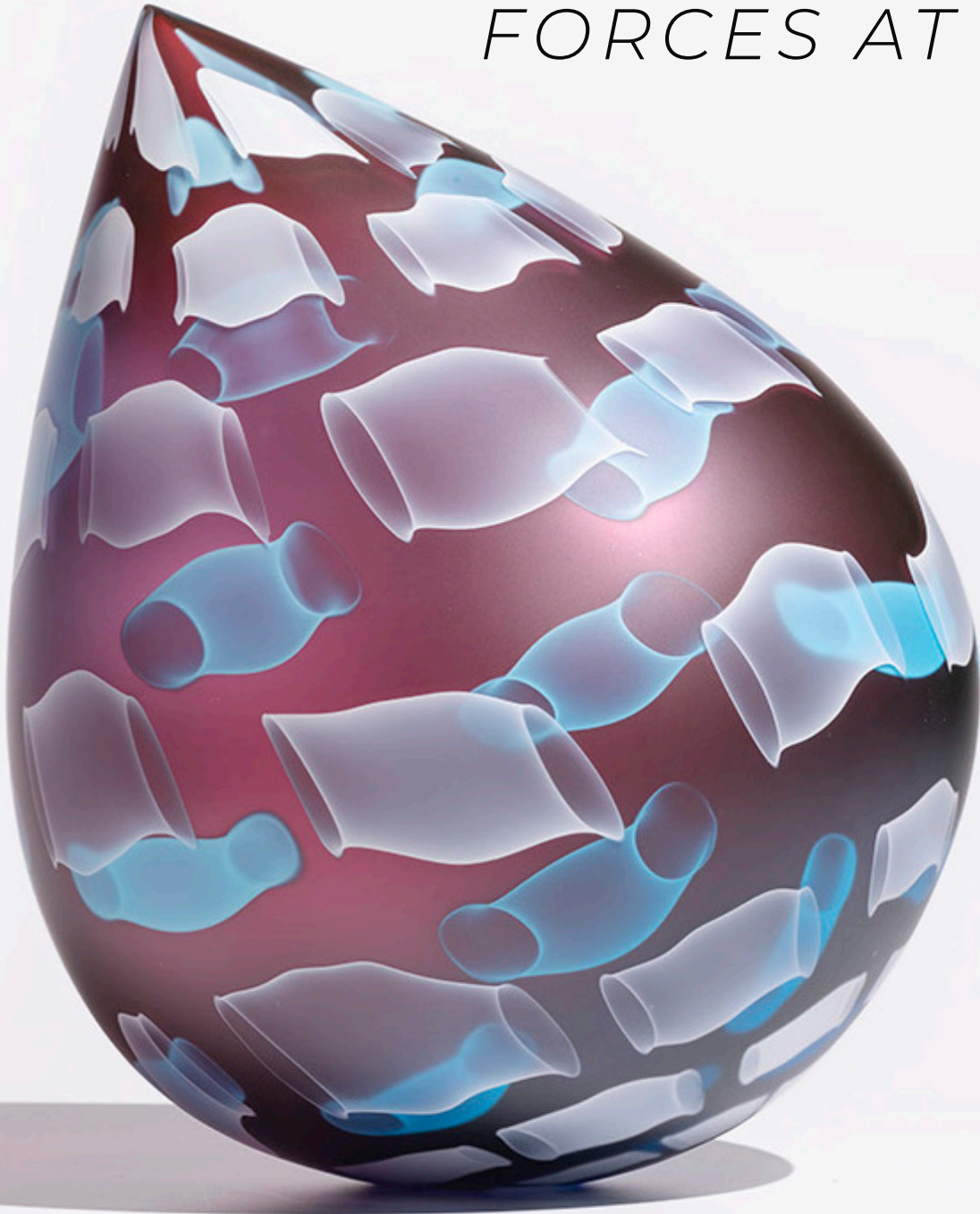


NANCY CALLAN:

FORCES AT PLAY



Luminescence Droplet, 2021.

Museum of Glass
Tacoma, Washington
Traveling Exhibitions
museumofglass.org/traveling-exhibitions



SEEING GLASS THROUGH THE EYES OF NANCY CALLAN IS A DELIGHT AND EXPERIENCING THE MATERIAL THROUGH HER WORK IS A MASTER CLASS IN THE ARTISTIC PROCESS.

Her elegant, playful designs are inspired by a seemingly limitless visual vocabulary, and are executed with extraordinary technical expertise. *Nancy Callan: Forces at Play*, Callan's first major solo exhibition, will debut at Museum of Glass in 2024 and will invite visitors to experience the multitude of ways Callan has used hot glass as a canvas for her perspectives on the world around her.

The exhibition will unfold through a series of thematic groupings that explore the sources of

inspiration that have fueled Callan's career: pattern and textiles; Pop Art and graphic design; and nature and the wonders of the universe. Each thematic grouping will be represented by a series of artworks, illustrating Callan's conceptual development, and her exploration of form and pattern. These narrative themes will unfold in a multi-sensory environment, creating an insider's look into Callan's process through a series of studio vignettes, tactile components, and film which will capture the essence of Callan's artistic process. The exhibition will also feature new work, created and documented in the Museum's Hot Shop through a series of residencies in August 2022 and July 2023.

Nancy Callan: Forces at Play celebrates the thoughtfulness, wit, and sense of wonder that are signatures of Callan's work and invites viewers to view the world around them with the same curiosity and passion that have fueled Callan's artistic vision.



Tunnel Vision, 2020.



Medicine Cabinet, 2010.

EXHIBITION SPECIFICATIONS

Number of Works: Approximately 40 glass sculptures and 14 glass wall mounted groupings

Space Requirements: Approximately 3,000 square feet

Participation Fee: TBD includes – courier, wall-to-wall fine arts insurance, crating and packing (venues will need to cover cost of artist to be present at installation and/or events if requested)

Shipping: Pro-rated shipping will be organized by Museum of Glass and billed at close of venue.

TOUR AVAILABILITY

Museum of Glass: Fall 2024 – May 2025

Open Venues: July 2025 and ongoing

SUPPORT MATERIAL

Exhibition catalog, related interpretive materials, and curriculum.

CONTACT

ONLINE at: MuseumofGlass.org/Traveling-Exhibitions

EMAIL: traveling.exhibitions@museumofglass.org

PHONE: Curatorial Department – 253.284.4705

POP ART | TOYS | GRAPHIC DESIGN



Catwoman Stinger, 2022.



Dandy Top, 2015.



Pop Top, 2014.

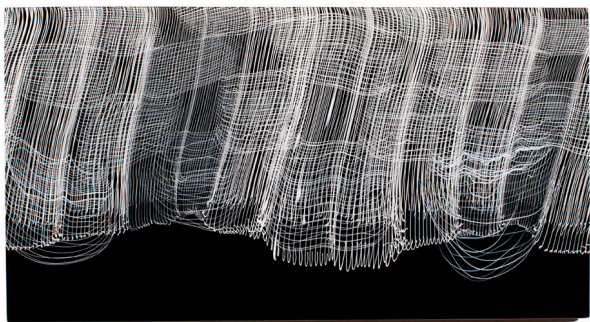


Bee Butts, 2013.

PATTERN & TEXTILES



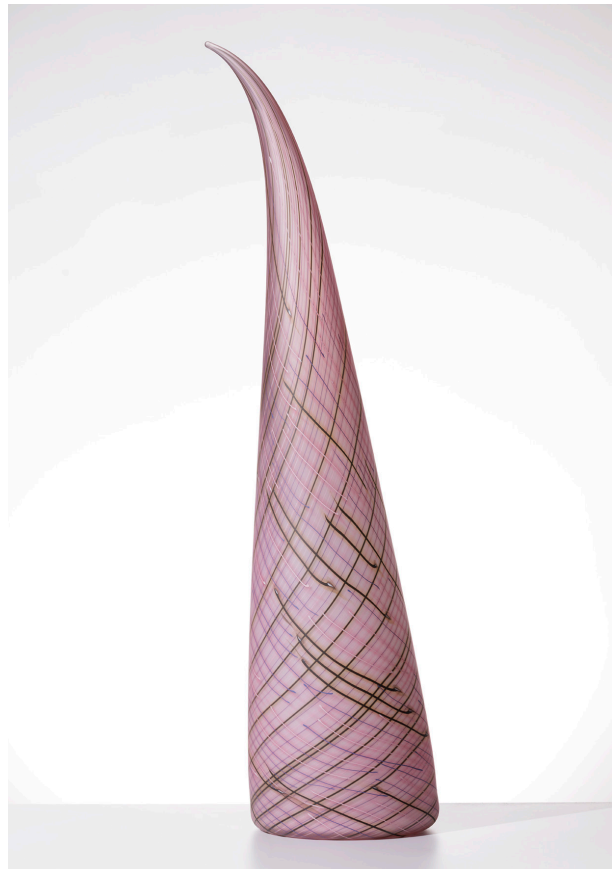
Nikkita Paloma, 2019.



Chipweave, 2018.



Icicle II, 2022.



Sonya Winkle, 2014.

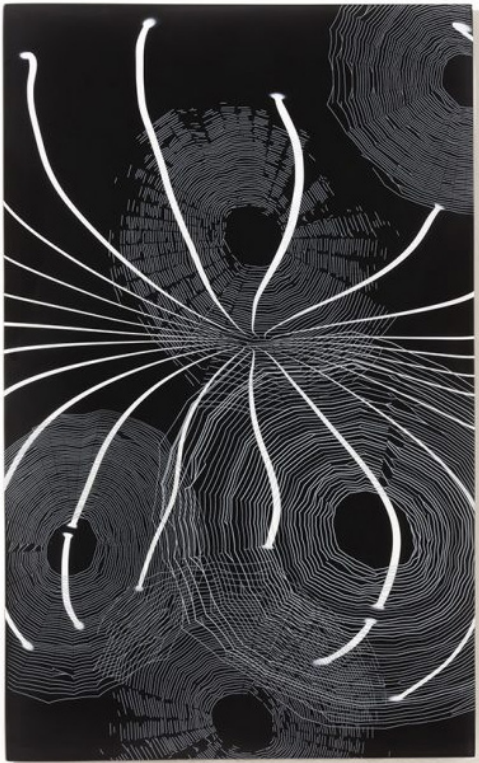
NATURE | WONDERS OF THE UNIVERSE



Laguna Shimmer Orb, 2018.



Ghostly Forms, 2021.



Webs, 2020.



Persian Cloud, 2015.

NANCY CALLAN

grew up near Boston, MA, working as a pizza-maker, band roadie, and graphic designer before attending the Massachusetts College of Art (BFA 1996). A chance peek into the hot glass studio changed the trajectory of her life; she was entranced by the fluid, glowing, material and the demanding choreography of working at the furnace. In 1996 she relocated to Seattle, WA to join *maestro* Lino Tagliapietra's glassblowing team, rising to a key position as his assistant and travelling internationally to teach and demonstrate the craft. Through this nineteen-year apprenticeship, Callan mastered the traditional Venetian glassblowing techniques that are the foundation of her innovative work with line, pattern and color. She continues to blaze a trail as an LGBTQ+ woman, helping to inspire, teach and mentor the next generation of diverse artists in glass.

Callan began exhibiting her work in the 2000s. Her first solo exhibition featured vessels and sculptures made during a residency at the Creative Glass Center of America at Wheaton Village in NJ. Residencies, workshops, and collaborations continue to feed her practice and create space for experimentation.

AN AVID FAN OF VINTAGE POP CULTURE AND CONTEMPORARY FASHION, CALLAN'S WORK BRINGS A MODERN SENSIBILITY TO THE MATERIAL AND PROCESSES OF HOT GLASS WORKING.

Nancy Callan is represented by galleries throughout North America. Her artwork is held in numerous collections including Museum of Glass (WA), Microsoft Collection, Chrysler Museum of Art (VA), Mint Museum (NC), Peabody-Essex Museum (MA), Barry Art Museum (VA), The Corning Museum of Glass (NY) and Shanghai Museum of Glass (China).



Linea, 2018.



IMAGE CREDITS

All works are by Nancy Callan (American, born 1964). Unless otherwise indicated, all works are Collection of the artist.
Photo by Russell Johnson, courtesy of the artist.

Cover – *Luminescence Droplet*, 2021. Blown and etched glass; 17 x 14 x 14 inches.

p.2 – *Tunnel Vision*, 2020. Blown and slumped glass; 22 x 34 x 1 inches. Private Collection.

p.3 – *Medicine Cabinet*, 2010. Blown glass bottles in wood cabinet; 10 x 15 x 6 inches. Collection of Jim Schantz and Kim Saul.

p.4 – Left to right, top to bottom:

Catwoman Stinger, 2022. Blown glass; 37 x 18 1/2 x 18 1/2 inches.

Dandy Top, 2015. Blown glass; 13 x 17 x 13 inches. Private Collection.

Pop Top, 2014. Blown glass; 13 x 17 x 14 inches. Private Collection.

Bee Butts, 2013. Blown glass; largest: 10 x 10 x 12 inches.

p.5 – Left to right, top to bottom:

Nikkita Paloma, 2019. Blown glass; 25 x 13 x 9 inches.

Icicle II, 2022. Blown and etched glass; 21 x 15 x 10 inches. Private Collection.

Chipweave, 2018. Blown and slumped glass; 15 3/4 x 29 1/4 inches.

Sonya Winkle, 2014. Blown and etched glass; 39 x 9 1/2 x 9 1/2 inches.

p.6 – Left to right, top to bottom:

Laguna Shimmer Orb, 2018. Blown glass; 17 x 17 x 17 inches.

Ghostly Forms, 2021. Blown and slumped glass; 27 x 18 3/4 x 1 inches.

Webs, 2020. Blown, slumped, and enameled glass; 29 1/2 x 18 1/2 x 1 inches.

Persian Cloud, 2015. Blown glass; 13 x 18 1/2 x 8 inches. Private Collection.

p.7 – *Linea*, 2018. Blown and slumped glass; 51 1/2 x 80 1/2 inches. Private Collection.

p.8 – Photo courtesy of Museum of Glass.